

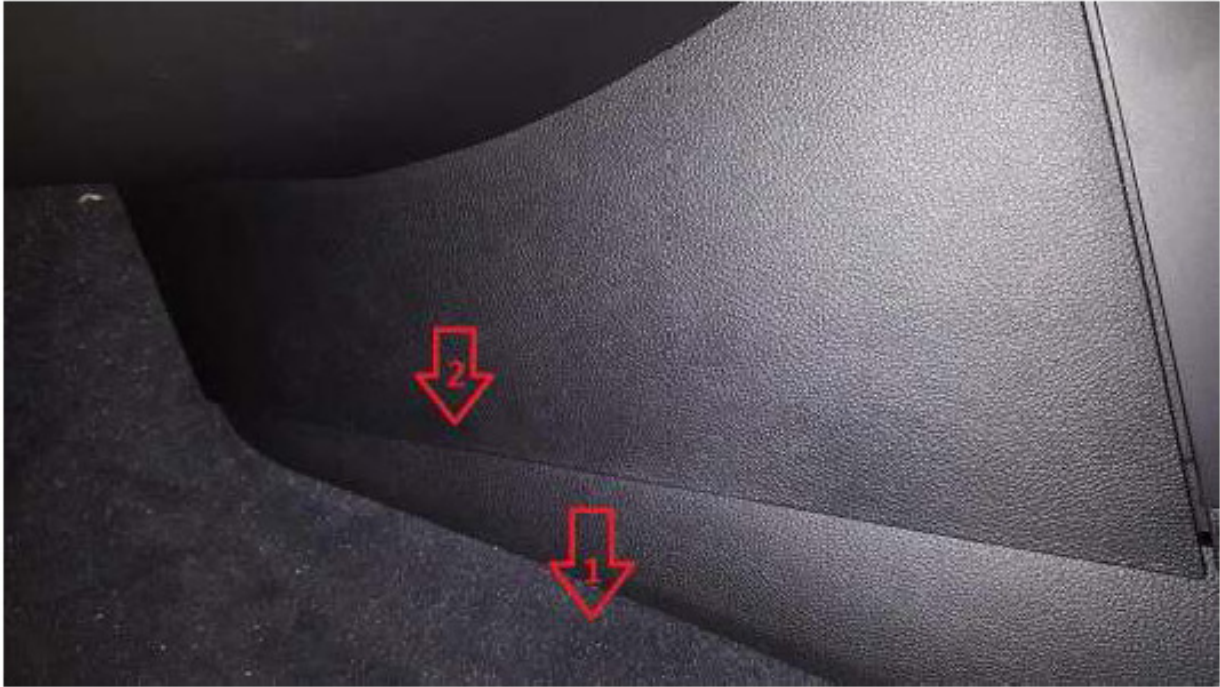
## M505-1 Into a VE Commodore series 1



This is the kit.



This is the factory installed radio.



**First off on both sides of the console we need to pull the number 1 panel down and then pull the number 2 panel down and take it out.**



**On the drivers side up behind those panels you just took off is a plug you need to remove this plug. There may be another plug above this plug that needs to be removed depending on your model.**



**How to remove the glovebox**



**Remove this trim by pulling it towards the seat**



**Undo these screws inside the glovebox**



**Under the glovebox In the passenger footwell remove this trim by pulling it down towards the floor**

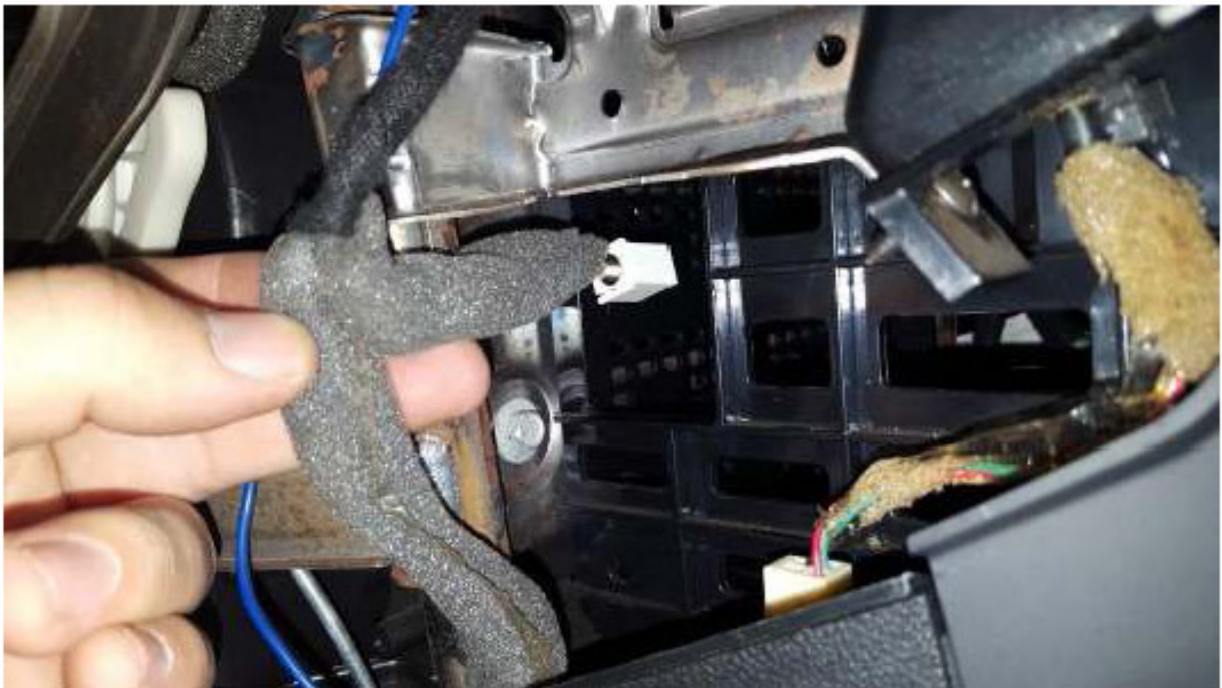


**Also undo the screws at the bottom of the glovebox and the glovebox should now slide out**





**There is a plug on the passenger side of the radio that needs to be disconnected.**



**This is the plug you need to unplug to remove the radio, you might have 2 plugs if you have factory satnav.**

**How to remove the radio box**



**To remove the face panel you put your hand behind it like this and pull towards the gear shifter.**



**The face panel will come off like this and expose the main unit behind it.**





**Remove these 4 screws, then slide out the main unit.**



**The factory unit is now removed, now its time to install.**



**Make sure everything fits good then take this to the vehicle and plug it in.**

**The user manual should have info about the plugs, there is just 2 plugs needed to connect it to the vehicle the large black plug and the ant wire.**

**The gps ant you will want to put up under the dash, I put mine up above the glovebox.**

**If you have an amp the radio wires have a wire marked AMP which is the trigger wire to turn the amp on you can run that with the rca cables to the amp.**

**If you want to install a reverse camera there is a rca connection for that, just connect the power for the camera to one of the reverse lights at the back of the vehicle.**

**You should run the grey usb cable into the glovebox so you can access it when you want to change/add media.**





**Once all the wires are packed in and connections for amps and cams are done slide the unit into the spot you took the factory unit out from**



**secure it with the 4 screws that held the factory unit in place.**

**Connect the 2 cables to the face plate and attach the face plate to the main unit, its pretty much like how the factory unit goes together.**



**Now it is all done, make sure everything works and enjoy not having that junk holden called a radio.**

**This unit has built in wifi and will allow you to use a usb hard drive upto 2tb in size using the fat32 filesystem.**

**If you run the usb cable you can put the usb hdd in the glovebox for easy access.**

**You can use 64gb micro sd cards in the map and sd slots.**